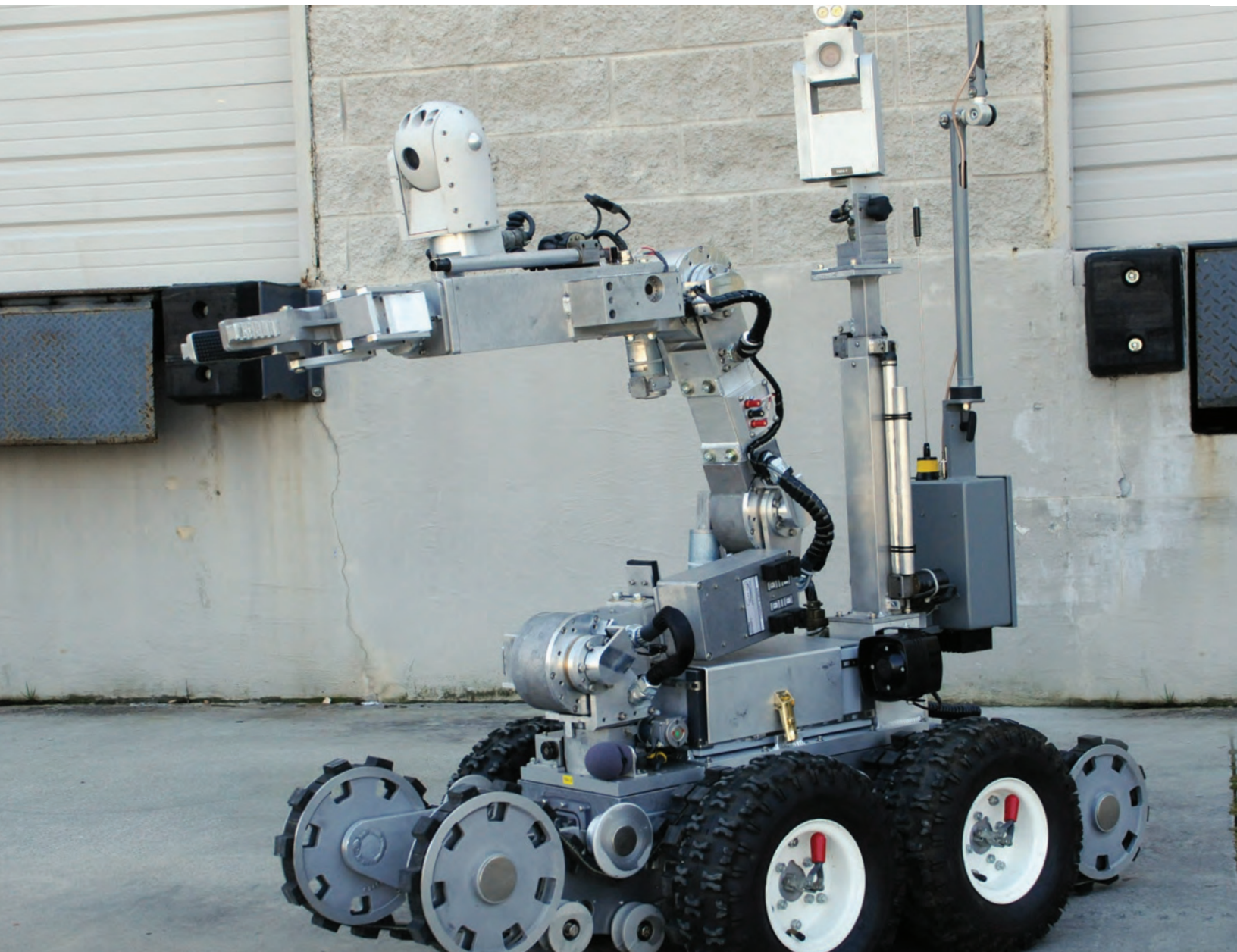


▼ Remotec Andros™ F6 Series

The industry's most versatile Unmanned Ground Vehicle System



Remotec | Keeping Danger at a Distance

Remotec Andros™ F6 Series CX Specs

Dimensions

- Height: 58.5" (1486 mm)
- Width: 29" or 17.5" (445 mm) without wheels
- Length: 52" (1320 mm)
- Ground Clearance: 3.5" (89 mm)

Weight:

- 490 lbs (220 kg)

Mobility:

- Articulated tracks with position feedback and quick release wheels
- Slope: 45° incline, 37° stairs
- Speed: 0 to 3+ mph (0 to 4.8+ kph)
- Traverse: Opening up to 21" (533 mm) and Obstacles up to 18" (457 mm)
- Turning: Within the length of the vehicle

Manipulator:

- Variable Speed Control for precision
- Dual-sided quick change accessory mounting system
- Torso Rotate: +/-90° w/feedback
- Shoulder: 210° w/position feedback
- Elbow: 210° w/position feedback
- Wrist: 180° w/position feedback
- Wrist extend: 8" (203 mm)
- Grip rotate: 360° continuous w/feedback
- Gripper: 0" to 8" open/close (0 to 203 mm)
- Lifting: 65 lbs at 18" (29 kg @ 457 mm), 25 lbs at full extension (11 kg)
- Vertical reach: 109" (2764 mm) with tracks down and arm fully extended
- Horizontal reach: 56" (1422 mm) from front of vehicle

Cameras

Surveillance:

- Color camera with Low Light switching Capability
- Extra low light color pan/tilt/zoom with full 360° 215:1 continuous pan, 180° tilt, 215:1 zoom
- Auto/Manual Focus and Iris
- LED lights with remote switching from white to IR
- Motorized camera extender

Arm:

- Color camera with Auto/Manual focus
- Auto/Manual Iris
- Manually adjustable tilt
- LED light with remote switching from white to IR
- Manual 40:1 zoom
- Optional Arm Pan & Tilt Camera

Front Drive:

- B&W low light fixed focus; Auto Iris
- Optional Weapons Camera and laser sighting systems available.
- Optional Rear Drive Camera

Audio

- 2 Way Audio System with weatherproof speaker and microphone

Electrical

- 7 Isolated firing circuits: 24VDC
- Power supply: 24VDC 32 amp-hr gel-cell battery pack, Battery Charger, 110 or 220 VAC operation with optional cable reel link and AC power supply
- JAUS Compliant
- 1/4 Turn Connectors for easy connect/disconnect
- Data Links: Interchangeable Fiber Optic

Cable Reel, RF Analog/Hybrid System, or Hard-Line Cable Reel System

Environmental:

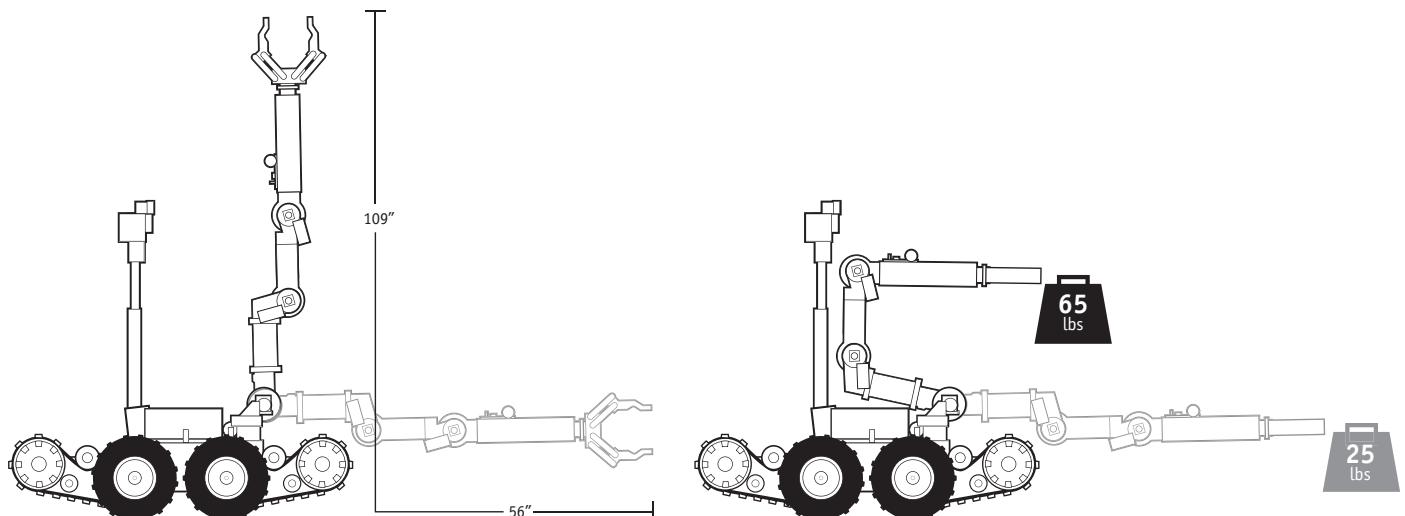
- Sealed, weather resistant enclosure
- Wet or dry surfaces

Other:

- 2.5 days of operator/maintenance training in Clinton, TN
- CD-ROM based operator and maintenance manual
- One year parts & labor warranty

Operator Control Unit:

- Removable switchbox for direct connection to robot
- 15" LCD monitor with daylight readable, anti-glare screen
- Picture-in-picture display with camera selection switch
- Graphic display of vehicle status, console battery condition, camera setup functions, and sensor feedback
- Video and audio output for event recording
- Joystick control for easy navigation
- Removable key firing circuit system
- Heavy duty, portable, weather resistant
- Includes 50 amp-hr 12VDC battery and 110VAC smart charger
- Operates on either 12VDC battery or GFI 110 or 220 VAC cord
- Microphone, speaker, and volume control
- 38 lbs., 10" x 23" x 18" (H/W/D) (17.3 kg, 254 x 584 x 457 mm H/W/D)
- One of the data link options must be purchased
- TAC-1 OCU with built-in LCD option
- Truck Mount Kit for vehicle integration



Improved
Pan & Tilt with LED
adjustable white light,
215:1 zoom

24" camera
extender

Gripper with continuous
rotate

Multiple-mission tool/
sensor mounts with plug
and play capabilities

Manipulator arm with seven
degrees of freedom ensuring
optimum dexterity with
position feedback

Quick-release, no tools re-
quired, pneumatic wheels for
rapid width reduction

Patented articulating
tracks allow for
traversing ditches,
obstacles and the
roughest terrain

*Shown with optional accessories

The Remotec F6 Series CX provides the best return on your investment:

On-Screen Graphics

- Improved software that provides an on-screen representation of your vehicle's orientation.
- This left-facing side view of the robot allows you to monitor feedback from on-board sensors in the manipulator (torso, shoulder, elbow, and wrist) & articulators.

- Errors and failures of joints, as well as restricted movements, are communicated on-screen graphically.

Improved Menu System

- More graphic, and intuitive menu-based interface.
- Menus are easier to navigate, and easier to read.
- The improved software also makes removing graphics or accessing status screens much more simple,

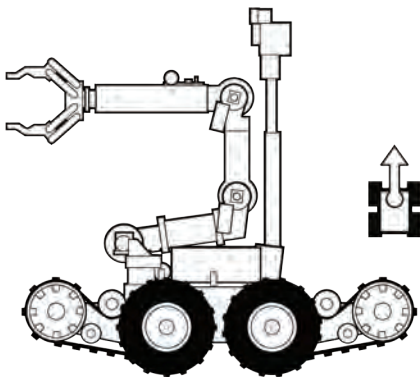
giving the end-user quick access to distraction free driving.

Position Presets

- Select from nine of the most commonly used positions, such as park, deploy, stair mode, and drive mode among others.
- In addition, users may also save up to 10 of their own, user-defined presets. All presets are easily accessible, and quickly deployed.

Remotec Andros™ F6 Series Model Comparison

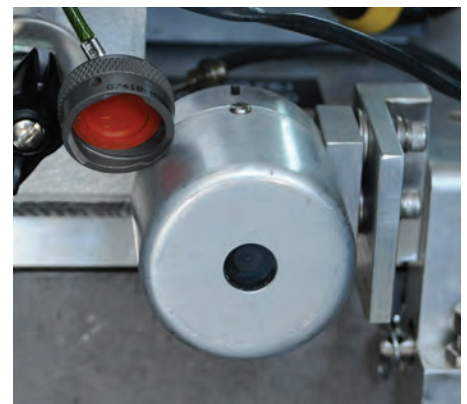
F6 Series CE	F6 Series CX
Software: <ul style="list-style-type: none"> ■ JAUS Compliant Software ■ Improved & updated menu system 	Software: <ul style="list-style-type: none"> ■ JAUS Compliant Software ■ Real-time position feedback on screen ■ 9 factory position presets ■ Up to 10 user-defined position presets ■ Improved & updated menu system
Manipulator: <ul style="list-style-type: none"> ■ 7 Degrees of Freedom ■ Color arm camera w/halogen lights 	Manipulator: <ul style="list-style-type: none"> ■ 7 Degrees of Freedom ■ Color arm camera with option of new pan & tilt camera with LED lights ■ Position Sensors for on-screen position feedback
Firing Circuits: <ul style="list-style-type: none"> ■ 4 firing circuits on the side of the manipulator 	Firing Circuits: <ul style="list-style-type: none"> ■ 3 firing circuits on the side of the manipulator ■ 2 firing circuits on top of manipulator (located near the accessory mount) ■ 2 firing circuits at rear of the robot
Cameras: <ul style="list-style-type: none"> ■ Surveillance, Arm, and Front Drive (optional rear drive camera) 	Cameras: <ul style="list-style-type: none"> ■ Surveillance, Arm, and Front Drive (optional rear drive camera) ■ Option to upgrade arm and surveillance cameras to new Pan & Tilt camera



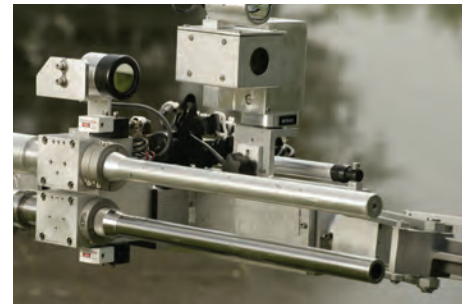
On-screen graphics provide real-time vehicle positioning (torso, shoulder, elbow, wrist, and articulators)



Seven isolated firing circuits are distributed on the F6+ arm and rear, allowing convenient and easy access.

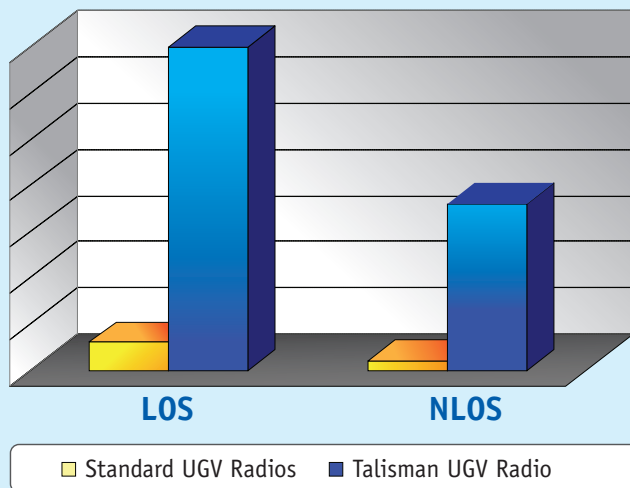


The F6+ upgrade allows users to add an optional rear-drive camera for ultimate situational awareness.



Andros™ Robots have more quick connect accessories and tools than any other robot manufacturer. We have developed a vast array of tools and accessories to remotely solve nearly any problem. Call today to see how Andros™ can Keep Danger at a Distance for you.

Talisman Range Comparison:



Talisman Radio

You no longer need to be tethered to your robot to have complete control in virtually any environment. The Remotec Talisman Gold™ utilizes a patented radio architecture coupled with Coded Orthogonal Frequency Division Multiplexing (COFDM) to provide increased RF ranges during tele-operations of UGVs in the harshest environments.

- Line of Sight (LOS) operations at up to 10x the range of previous RF Systems
- Losless NLOS at half the proven LOS range
- Better performance & penetration than competitor systems

Operator Control Unit

The TAC-1 Operator Control Unit puts all the functionality of our current table top control unit right in your hands while adding a bevy of new features in a durable and lightweight controller.

- Push-to-talk integrated microphone
- Ergonomic layout for extended use
- 8.4" integrated LCD monitor
- Back of unit features integrated speaker & handle
- Rugged, molded plastic body with durable membrane surface overlay
- Connects directly to robot, or to optional Truck Mount Kit for easy vehicle integration



Learning to Use the Andros™ F6 Series

Remotec offers customized training options to suit your organization's needs. Our training experts offer modular on-site sessions at your facility, or you may visit us for intensive, hands-on training. If you have any questions or need to schedule vehicle training, contact Remotec Customer Support at (865) 483-1492.

Unmatched Warranty and Service Programs

Remotec products are built to the strictest standard by highly

trained craftspeople using advanced manufacturing processes. Like all Remotec unmanned vehicle systems, the Andros™ F6B carries a one-year parts and labor warranty.

ISO 9001:2000

All of Remotec's unmanned vehicle systems are ISO 9001:2000 compliant.

GSA Contract Information

REMOTEC's GSA Contract #
GS-07F-0538M



**Oasis Towers 77 Herzel St.
Ramat Gan 52443 Israel**

**Tel: +972-3-6722226
Fax: +972-3-6722193**

NORTHROP GRUMMAN